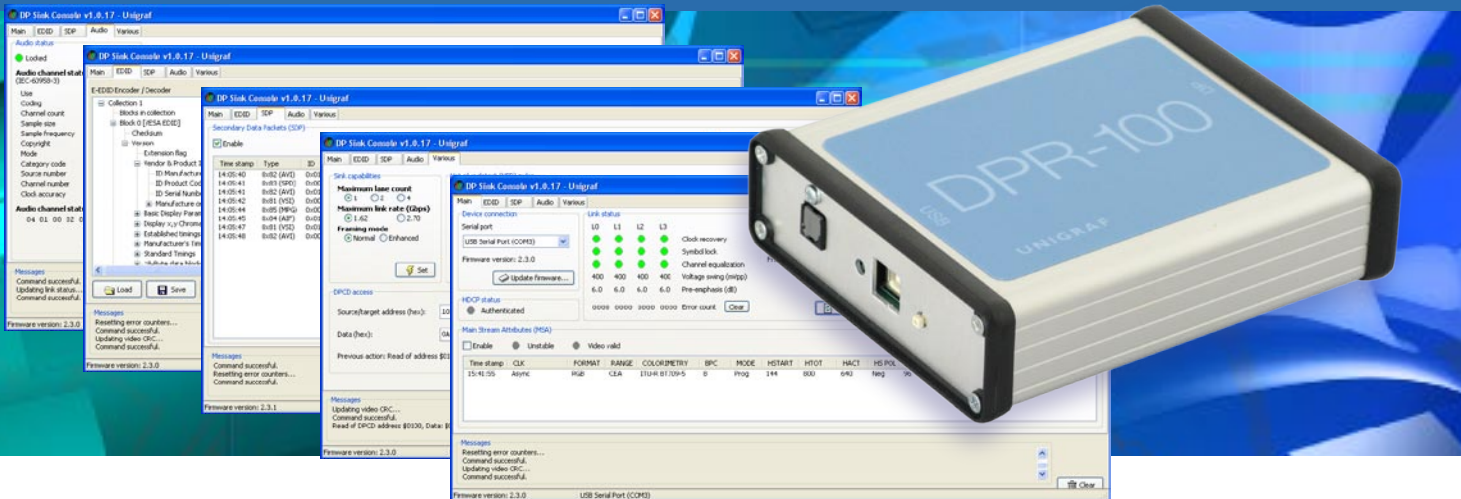


DPR-100

compact sized DisplayPort™
Reference Sink with Sink Console



Full DP Reference Sink Functionality

DPR-100 is a very compact, yet full featured DisplayPort™ reference Sink. It provides all features needed for testing DisplayPort™ source devices like PC display cards or portable computers. The DPR-100 allows you to monitor all aspects of the DP interface like Link and HDCP status and MSA. You can manually read and set DPR-100 DPCD, sink capabilities, issue varying HPD pulses etc. The Sink Console GUI also includes an advanced EDID editor for changing its EDID information.

In addition to the Sink Console GUI, you can use the Production Test Command set to interface DPR-100 to your automated production system. When used with Unigraf CTS software, DPR-100 will be a Certified TE for performing DisplayPort™ Certified Logo testing.

For Engineering and Production

The small size, only 10.5 x 13 x 3.5 centimeters make the DPR-100 ideal for both a laboratory desktop and production line instrument rack. The only connection needed are the DisplayPort™ input and a USB connection.

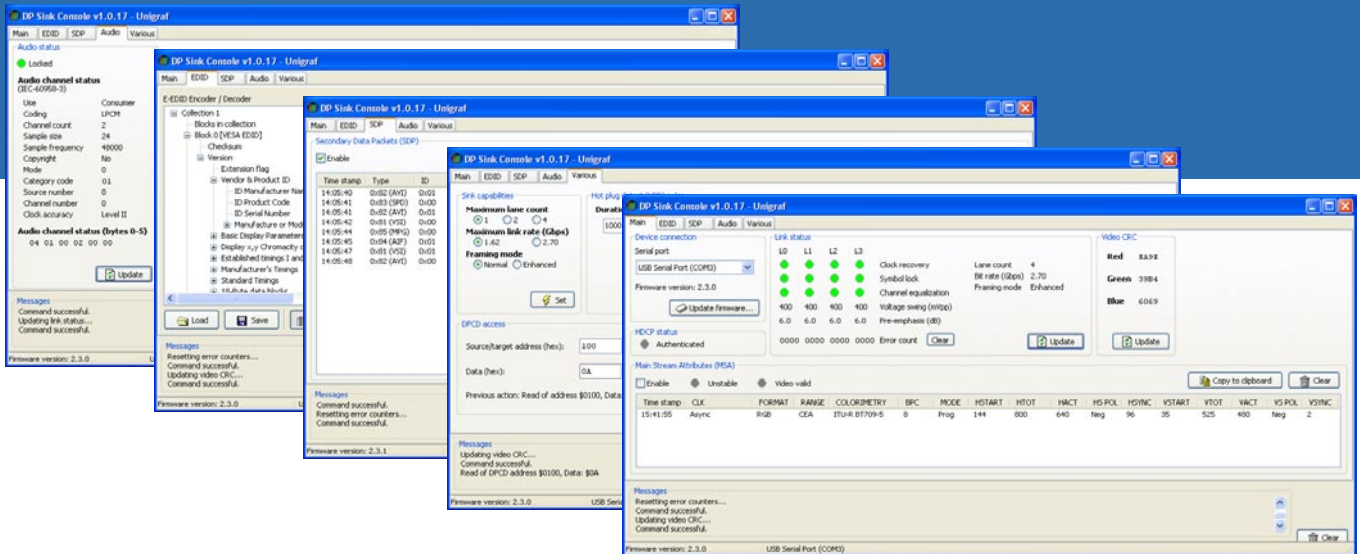
Benefits

- Compact sized DisplayPort™ sink
- Sink Console GUI enables full monitoring of the DP interface
- User programmable EDID
- Certified for DP LL, HDCP and Extended HDCP CTS testing
- USB powered
- USB controlled from PC



DPR-100

compact sized DisplayPort™ Reference Sink
with Sink Console



Sink Console GUI

As a development and debug tool, the DPR-100 is connected to a PC through its USB I/F and is operated from a GUI application. This application allows to

- Monitor the link status and Main Stream Attributes (MSA) like timing and color coding used
- Monitor video CRC and link error count
- Monitor Audio status
- Edit and vary DPR-100 EDID and DPCD information
- Vary DPR-100 capabilities like lane count and max rate
- Issue HPD with varying duration
- Report HDCP authentication status
- Audio output

Production testing

As a production testing aid, the DPR-100 can execute one or more sequences of operations.

- A sequence of user definable steps involving basic functionality
- A (CTS) test out of a fixed set.

CTS Software

The optional DisplayPort™ RefSink CTS tool enables the full Link Layer, HDCP or Extended HDCP compliance tests. Please refer to the documentation of the RefSink CTS Tool.

Specifications

DisplayPort™ input	STMicroelectronics gm68020 receiver. Supports 1, 2 or 4 lane configurations, four levels of pre-emphasis and voltage swing, high and reduced bit rates
Resolutions	All VESA DMT/CVT and CEA 861-D timings up to 2560 x 1600 (RB) 60 Hz
EDID	Load EDID data from file, Program new EDID, Display & edit EDID contents
Audio	Up to 2 LPCM channels at 192 kHz, 24-bits or multi-channel compressed (AC3, DTS, etc) compliant with IEC60958 / IEC61937
Control	USB interface
Power supply	USB powered
Mechanical Size	105 x 130 x 35 mm
Weight	240 g

Specifications subject to change



www.unigraf.fi

UNIGRAF OY Ruukintie 3, FI-02330 Espoo, Finland
Tel +358 9 859 550, fax +358 9 802 6699

UNIGRAF-USA Tel +1 888 362 7960, fax +1 605 362 7961
www.unigraf-us.com

Please visit www.unigraf.fi for listing of Unigraf Worldwide Distribution