

JOSY WELD INSPECTION

REDUCE REWORK COSTS

PART 1

JOSY

Manual weld inspection is inconsistent and is affected by issues such as fatigue or personal judgement – sometimes, bad welds will be classed as good. Conversely, some good welds may be called as bad, leading to unnecessary time and costs being spent on rework.

Allowing defective products to slip through can be costly, with future business lost, reputation damaged, and the possibility of customer fines or lawsuits, huge recalls, and the expenses associated with recalls, warranties and liabilities.



The JOSY system uses a 3D weld inspection sensor, typically mounted on a robot directly in the automated production line to inspect 100% of the welds.

High-speed 3D in-line inspection minimises rework and other quality costs. With JOSY's new and updated web-based visualisation software, users get proven quality inspection information in a tailored visual format.

This is reliable, objective data – unlike manual inspection, you have a demonstrable record of what the inspection system has seen.

GUIDED REWORK

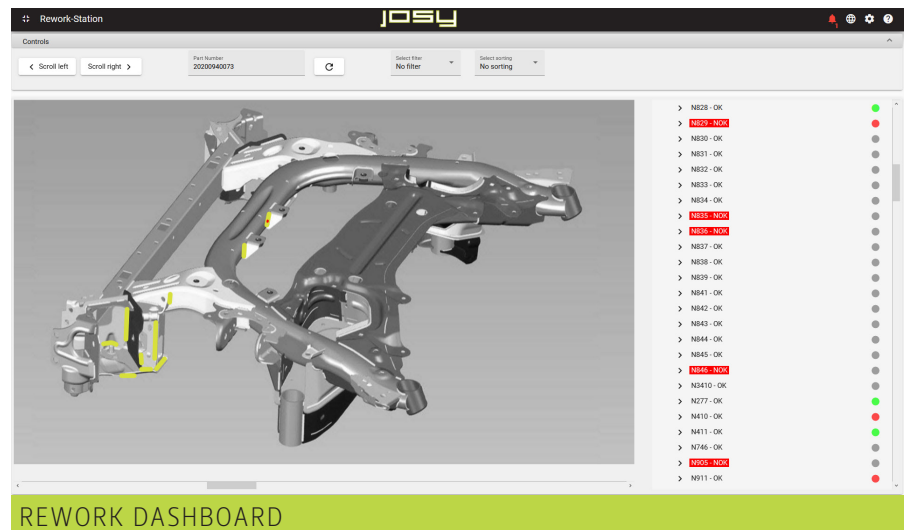
Based on the embedded workflow of JOSY, palm button-based rework station times are reduced significantly, along with operational costs.



TAILORED REWORK

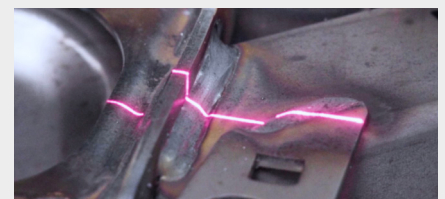
Based on direct visualisation of ONLY defective welds, the rework of already

okay welds that cannot be judged by the operator is avoided, and unnecessary rework is eliminated.



Not only does JOSY increase defect detection well beyond what manual inspection can achieve, it also provides a rapid return on investment making it, ultimately, less expensive than inspection by the human eye.

- **Reduced inspection costs** – fewer inspectors, less floor space needed, fewer cut and etch sections
- **Reduced rework costs** – an optimised process with less scrap and lower labour/repair costs



SEE THE SAVINGS | Installing a 3D weld inspection system can save you up to:

\$70-100,000 PER YEAR, PER INSPECTOR

\$100,000S IN REWORK COSTS

\$20,000 PER YEAR IN FLOOR SPACE

JOSY weld inspection – can you afford not to have it? **See the full story and let us calculate your ROI**