

# HT-2000-S Series

HT-2000-S-M Monochrome

HT-2000-S-C Color



## 2MP 10GigE camera with Sony Pregius IMX422 CMOS sensor

HT-2000-S features the Sony Pregius IMX422 sensor. At full resolution (1624 x 1240) you get up to 485 frames per second. With its 10GBaseT interface, sleek smaller case and CAT6A connection, this camera has the familiarity of GigE but with 10x the speed. Using CAT6A cabling, you can get cable lengths from 1 meter up to 100 meters. The HT-2000-S offers multi-camera synchronization at <math><1\mu s</math>, low CPU overhead, and excellent price-performance ratio.

### Benefits

- » High-speed RJ45 10GBaseT interface
- » 10x the speed of GigE
- » GigE Vision® and Genicam™ compliant

### Applications

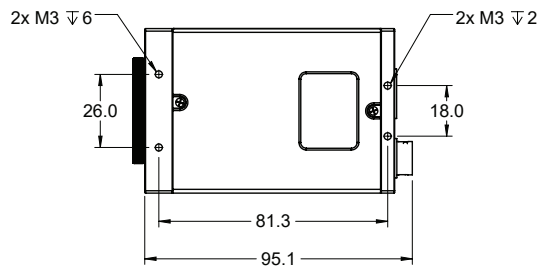
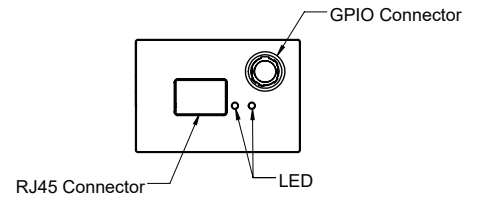
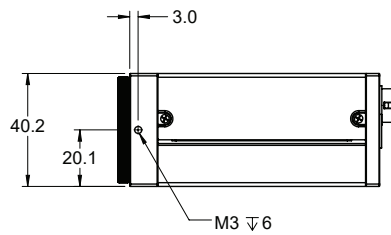
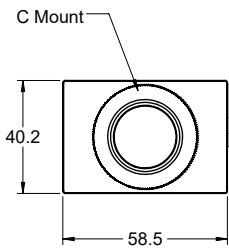
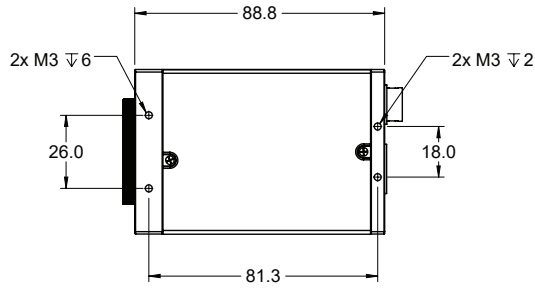
- » Immersive 3D Content
- » Finish Line Vision
- » Referee Assist

## Specifications

Sensor	Sony IMX422
Resolution	1624 x 1240
Megapixels	2.01 MP
Sensor Type	1/1.7- 9.2mm CMOS
Max Frame Rate	485 fps @ 8-bit 270 fps @ 12-bit
Cell Size	4.5µm
Standard Mount	C Mount
Shutter	Global
Bit Depth	8 & 12 bit
GPIO / Triggering	3 in, 3 out Software, External (Pulse or Edge)
Interface	RJ45 10GBaseT
Exposure/Integration*	5µs-1s
Dynamic Range	74 dB
Monochrome Modes	Mono8, Mono12, Mono12Packed
Color Modes	RGB8, BGR8, YUV411, YUV422, YUV444
Raw Modes	BayerRG8, BayerRG12, BayerRG12Packed
Operating System	Win10 (64 bit), Linux (64 bit)
Compliance	CE, FCC, RoHS, WEEE, GigE Vision, GenICam
Power Requirements	9W, 12V
Operating Temperature	0C- 45C
Storage Temperature	-30C to +60C
Dimensions & Weight	88 x 58 x 39- 275g
Warranty	2 Years

\*all minimum exposure specs can vary from what is listed based on the limitations of each sensor as per notice from the manufacturer.

## Mechanical drawings



## Spectral Sensitivity

