

HR-8000-SB-U Series

HR-8000-SB-U

UltraViolet imaging capability

Back-illuminated pixel structure



GiG
VISION

GEN<i>CAM

Pregius S

UltraViolet imaging capable 8.1MP 10GigE camera with Sony Pregius S IMX487 CMOS sensor

HR-8000-SB-U features the UltraViolet (UV) Sony Pregius S IMX487 sensor. The Sony Pregius S technology features back-illuminated pixel structure that delivers distortion-free, high imaging performance, miniaturization and high level of UV sensitivity. At full resolution (2840 x 2840) you get up to 145 frames per second. Its ultra high-speed SFP+ 10GigE interface offers many benefits including low-cost accessories, low CPU overhead, low latency, low jitter, and accurate multi-camera synchronization using IEEE1588. In addition, SFP+ 10GigE offers three supported cabling options for cable lengths from 1M to 10KM.

Benefits

- » High-speed SFP+ 10GigE interface
- » UV waveband sensor (200nm to 400nm)
- » Back-illuminated pixel structure
- » 10x the speed of GigE
- » Ultra high data/frame rates
- » GigE Vision® and GenICam™ compliant
- » Optional IP67 housing

Applications

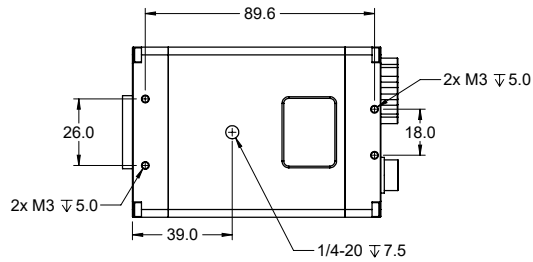
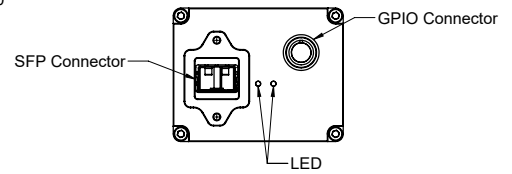
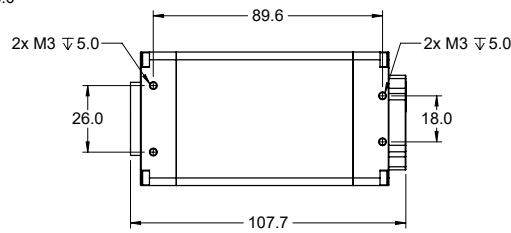
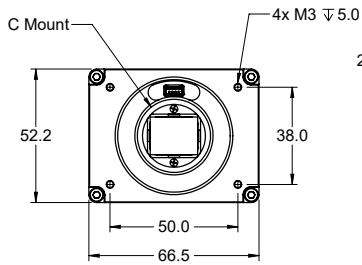
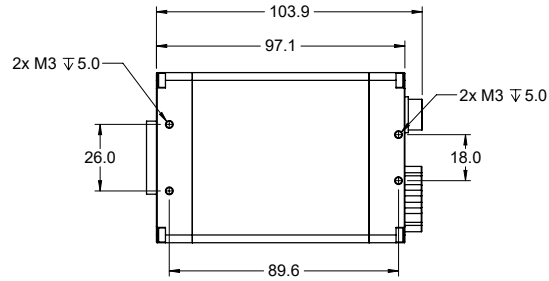
- » Semiconductor Manufacturing
- » Sorting Waste Plastics
- » High-Voltage Cables Inspection
- » Printing Inspection
- » High Resolution Microscopy
- » Luminescence Spectroscopy

Specifications

Sensor	Sony IMX487
Resolution	2840 x 2840
Megapixels	8.1 MP
Sensor Type	2/3 CMOS
Max Frame Rate	145 fps @ 8-bit 100 fps @ 12-bit
Cell Size	2.74µm x 2.74µm
Standard Mount	C Mount
Shutter	Global
Bit Depth	8 & 12 bit
GPIO / Triggering	3 in, 3 out Software, External (Pulse or Edge)
Interface	SFP+ 10GigE
Exposure/Integration*	5µs-1s
Dynamic Range	74 dB
Monochrome Modes	Mono8, Mono12, Mono12Packed
Operating System	Win10 (64 bit), Linux (64 bit)
Compliance	CE, FCC, RoHS, WEEE, GigE Vision, GenICam
Power Requirements	9W, 12V
Operating Temperature	0C- 45C
Storage Temperature	-30C to +60C
Dimensions & Weight	97 x 66 x 52- 500g
Warranty	2 Years

*all minimum exposure specs can vary from what is listed based on the limitations of each sensor as per notice from the manufacturer.

Mechanical drawings



Any Questions?

1-866-780-6082

sales@emergentvisiontec.com