

HR-4000 Series

HR-4000-M Monochrome

HR-4000-C Color

HR-4000-N Near IR



4MP 10GigE Camera with CMV4000 CMOS Sensor

HR-4000 features the CMV4000 sensor by AMS. Benefits include high sensitivity, high dynamic range, and high frame rate. At full resolution (2048 x 2048), you get 179 frames per second. The HR-4000 series offers multi-camera synchronization at <math><1\mu s</math>, low CPU overhead, excellent price-performance ratio, and fiber cable lengths from 1M to 10KM without the need of fiber converters or repeaters. A near-infrared option is available for this model.

Benefits

- » High-speed 10GigE SFP+ Interface
- » 10x the speed of GigE
- » GigE Vision® and Genicam™ compliant
- » Optional IP67 housing

Applications

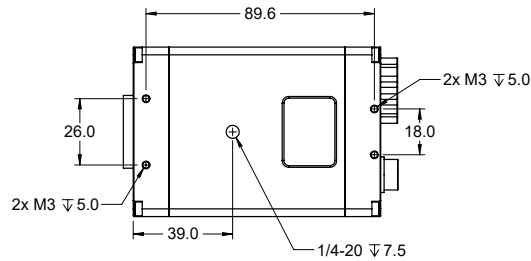
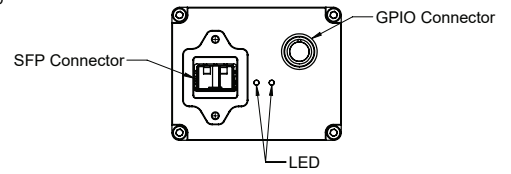
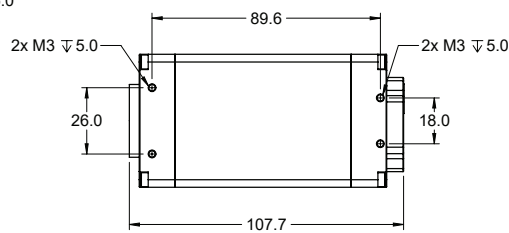
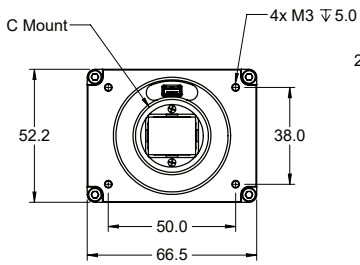
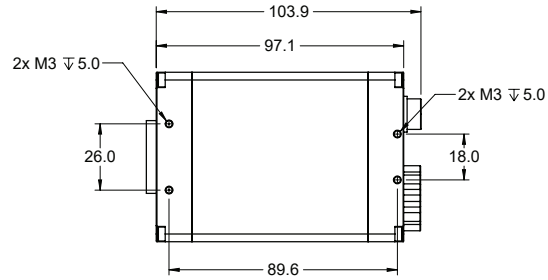
- » Production lines
- » Immersive 3D Content
- » Goal Line technology
- » Finish Line Vision
- » Referee Assist
- » Sports, Broadcast, Entertainment
- » Pharmaceutical Inspection

Specifications

Sensor	CMV4000
Resolution	2048 x 2048
Megapixels	4 MP
Sensor Type	1" CMOS
Max Frame Rate	179 fps
Cell Size	5.5µm square
Standard Mount	C Mount
Shutter	Global
Bit Depth	8 & 10 bit
GPIO / Triggering	3 in, 3 out Software, External (Pulse or Edge)
Interface	SFP+ 10GigE
Exposure/Integration*	10µs-1s
Dynamic Range	60 dB
Monochrome Modes	Mono8, Mono10, Mono10Packed
Color Modes	RGB8, BGR8, YUV411, YUV422, YUV444
Raw Modes	BayerGB8, BayerGB10, BayerGB10Packed
Operating System	Win7/8/10 (64 bit), Linux (64 bit)
Compliance	CE, FCC, RoHS, WEEE, GigE Vision, GenICam
Power Requirements	9W, 12V
Operating Temperature	0C- 45C
Storage Temperature	-30C to +60C
Dimensions & Weight	97 x 66 x 52- 500g
Warranty	2 Years

*all minimum exposure specs can vary from what is listed based on the limitations of each sensor as per notice from the manufacturer.

Mechanical drawings



Spectral Sensitivity

