

# HR-30000-S Series

HR-30000-S-M Monochrome

HR-30000-S-C Color



## 31.36MP 10GigE camera with Sony IMX342 CMOS sensor

HR-30000-S features the Sony IMX342 CMOS sensor. At full resolution (6464 x 4852), you get up to 35 frames per second. Its ultra high-speed SFP+ 10GigE interface offers many benefits including low-cost accessories, low CPU overhead, low latency, low jitter, and accurate multi-camera synchronization using IEEE1588. In addition, SFP+ 10GigE offers three supported cabling options for cable lengths from 1M to 10KM.

### Benefits

- » High-speed SFP+ 10GigE interface
- » 10x the speed of GigE
- » Ultra high data/frame rates
- » GigE Vision® and Genicam™ compliant
- » Optional IP67 housing

### Applications

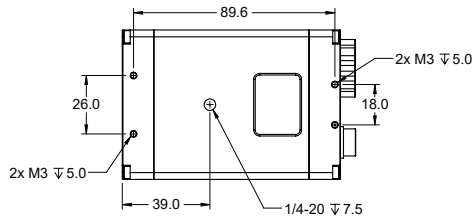
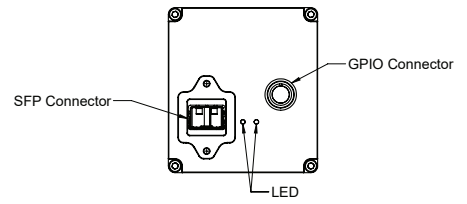
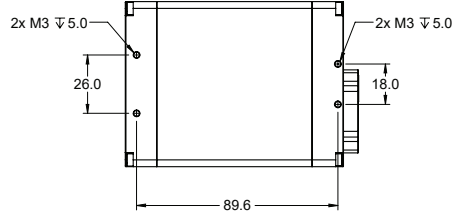
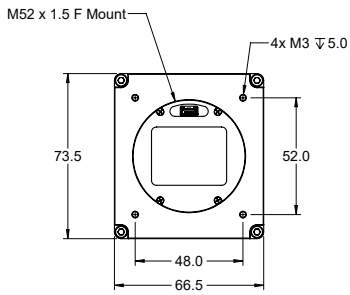
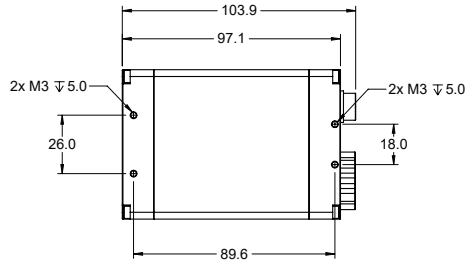
- » Virtual reality
- » Volumetric capture
- » LCD Inspection
- » Immersive 3D Content
- » Finish Line Vision
- » Referee Assist

## Specifications

Sensor	Sony IMX342
Resolution	6464 x 4852
Megapixels	31.36MP
Sensor Type	APS-C (4:3) CMOS
Max Frame Rate	35 fps @ 8-bit 25 fps @ 12-bit
Cell Size	3.45µm square
Standard Mount	52mm, M52x1.5x12mm BFL, F-mount Available
Shutter	Global
Bit Depth	8 & 12 Bit
GPIO / Triggering	3 in, 3 out Software, External (Pulse or Edge)
Interface	SFP+ 10GigE
Exposure/Integration*	35µs- 1s
Dynamic Range	71 dB
Monochrome Modes	Mono8, Mono12, Mono12Packed
Color Modes	RGB8, BGR8, YUV411, YUV422, YUV444
Raw Modes	BayerRG8, BayerRG12, BayerRG12Packed
Operating System	Win10 (64 bit), Linux (64 bit)
Compliance	CE, FCC, RoHS, WEEE, GigE Vision, GenICam
Power Requirements	8W, 12V
Operating Temperature	0C- 45C
Storage Temperature	-30C to +60C
Dimensions & Weight	97 x 66 x 73- 600g
Warranty	2 Years

\*all minimum exposure specs can vary from what is listed based on the limitations of each sensor as per notice from the manufacturer.

## Mechanical drawings



## Spectral Sensitivity

