

# HR-17000-S Series

HR-17000-S-M Monochrome

HR-17000-S-C Color



## 16.8MP 10GigE camera with Sony IMX387 CMOS sensor

HR-17000-S features the Sony IMX387 CMOS sensor. At full resolution (5456 x 3076), you get up to 61 frames per second. Its ultra high-speed SFP+ 10GigE interface offers many benefits including low-cost accessories, low CPU overhead, low latency, low jitter, and accurate multi-camera synchronization using IEEE1588. In addition, SFP+ 10GigE offers three supported cabling options for cable lengths from 1M to 10KM.

### Benefits

- » High-speed SFP+ 10GigE interface
- » 10x the speed of GigE
- » Ultra high data/frame rates
- » GigE Vision® and Genicam™ compliant
- » Optional IP67 housing

### Applications

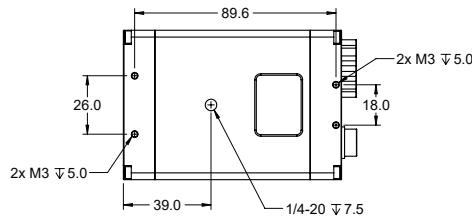
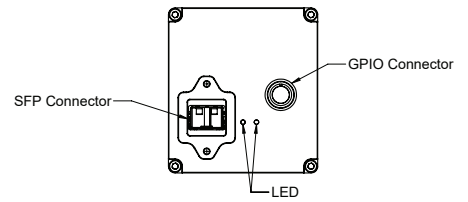
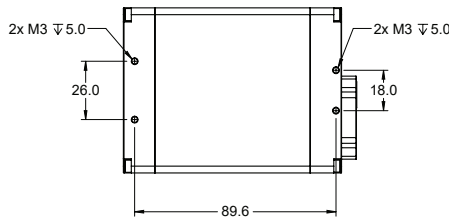
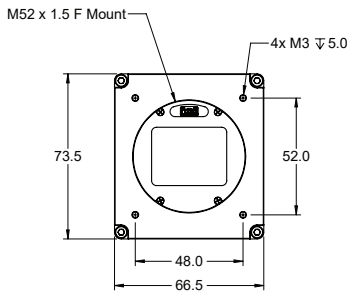
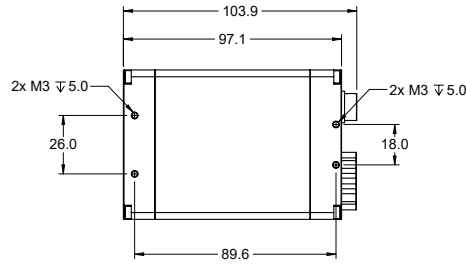
- » Virtual reality
- » Goal Line technology
- » 4D reconstruction
- » Volumetric capture
- » Motion capture
- » Immersive 3D Content
- » Finish Line Vision
- » Referee Assist

## Specifications

Sensor	Sony IMX387
Resolution	5456 x 3076
Megapixels	16.8 MP
Sensor Type	Four Thirds (16:9)- CMOS
Max Frame Rate	61 fps @ 8-bit 40 fps @ 12-bit
Cell Size	3.45µm square
Standard Mount	52mm, M52x1.5x12mm BFL, F-mount Available
Shutter	Global
Bit Depth	8 & 12 Bit
GPIO / Triggering	3 in, 3 out Software, External (Pulse or Edge)
Interface	SFP+ 10GigE
Exposure/Integration*	35µs- 1s
Dynamic Range	71 dB
Monochrome Modes	Mono8, Mono12, Mono12Packed
Color Modes	RGB8, BGR8, YUV411, YUV422, YUV444
Raw Modes	BayerRG8, BayerRG12, BayerRG12Packed
Operating System	Win10 (64 bit), Linux (64 bit)
Compliance	CE, FCC, RoHS, WEEE, GigE Vision, GenICam
Power Requirements	8W, 12V
Operating Temperature	0C- 45C
Storage Temperature	-30C to +60C
Dimensions & Weight	97 x 66 x 73- 600g
Warranty	2 Years

\*all minimum exposure specs can vary from what is listed based on the limitations of each sensor as per notice from the manufacturer.

## Mechanical drawings



## Spectral Sensitivity

