

HB-50000 Series

HB-50000-M Monochrome

HB-50000-C Color



50MP 25GigE camera with CMV50000 CMOS sensor

HB-50000 features the CMV50000 CMOS sensor by AMS. At full resolution (7920 x 6004), you get 30 frames per second. Its ultra high-speed 25GigE SFP28 interface offers many benefits including low-cost accessories, low CPU overhead, low latency, low jitter, and accurate multi-camera synchronization using IEEE1588. In addition, SFP28 offers three supported cabling options for cable lengths from 1M to 10KM.

Benefits

- » High-speed SFP28 - 25GigE interface
- » 25x the speed of GigE
- » Ultra high data/frame rates
- » Simplified solution to CoaXPress
- » GigE Vision® and Genicam™ compliant
- » Optional IP67 housing

Applications

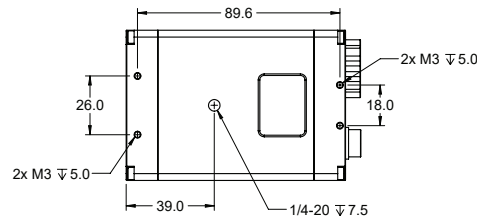
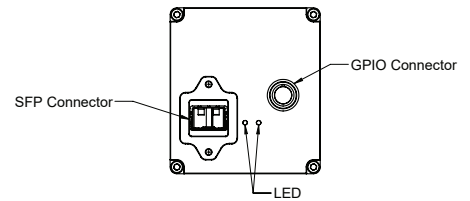
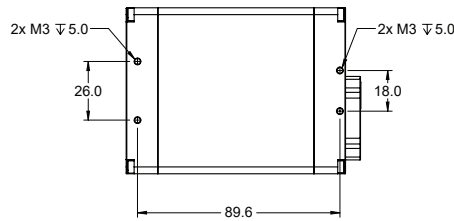
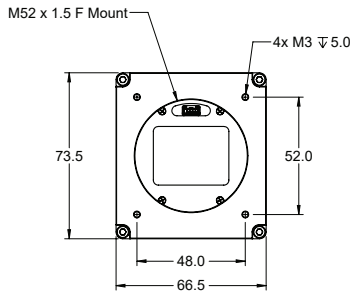
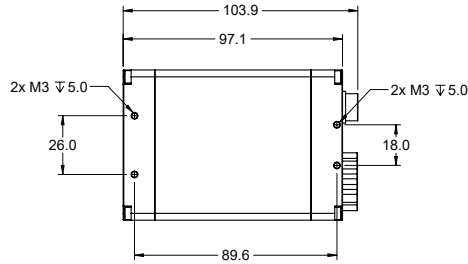
- » Virtual reality
- » Aerial surveillance
- » 3D mapping
- » 4D reconstruction
- » Volumetric capture
- » Motion capture
- » LCD Inspection
- » Immersive 3D Content
- » Finish Line Vision
- » Referee Assist

Specifications

Sensor	CMV50000
Resolution	7920 x 6004
Megapixels	50 MP
Sensor Type	35mm CMOS
Max Frame Rate	30 fps
Cell Size	4.6µm square
Standard Mount	52mm, M52x1.5x12mm BFL, F-mount Available
Shutter	Global
Bit Depth	8 & 12 Bit
GPIO / Triggering	3 in, 3 out Software, External (Pulse or Edge)
Interface	SFP28- 25GigE
Exposure/Integration*	100µs-1s
Dynamic Range	64 dB
Monochrome Modes	Mono8, Mono12
Color Modes	RGB8, YUV411, YUV422, YUV444, BGR8
Raw Modes	BayerRG8, BayerRG12
Operating System	Win10 (64 bit), Linux (64 bit)
Compliance	CE, FCC, RoHS, WEEE, GigE Vision, GenICam
Power Requirements	9W, 12V
Operating Temperature	0C- 45C
Storage Temperature	-30C to +60C
Dimensions & Weight	97 x 66 x 73- 600g
Warranty	2 Years

*all minimum exposure specs can vary from what is listed based on the limitations of each sensor as per notice from the manufacturer.

Mechanical drawings



Spectral Sensitivity

