

# HB-12000 Series

**HB-12000-M Monochrome**

**HB-12000-C Color**



## 12MP 25GigE camera with CMV12000 CMOS sensor

HB-12000 features the CMV12000 CMOS sensor by AMS. Benefits include high resolution, high speed and overall high performance. At full resolution (4096 x 3072), you get 188 frames per second. Its ultra high-speed 25GigE SFP28 interface offers many benefits including low-cost accessories, low CPU overhead, low latency, low jitter, and accurate multi-camera synchronization using IEEE1588. In addition, SFP28 offers three supported cabling options for cable lengths from 1M to 10KM.

### Benefits

- » High-speed SFP28 - 25GigE interface
- » 25x the speed of GigE
- » Ultra high data/frame rates
- » Simplified solution to CoaXPress
- » GigE Vision® and Genicam™ compliant
- » Optional IP67 housing

### Applications

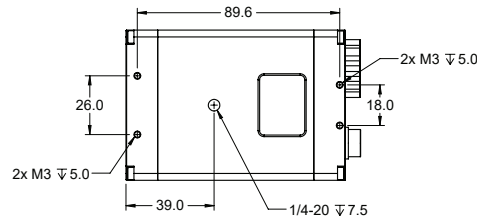
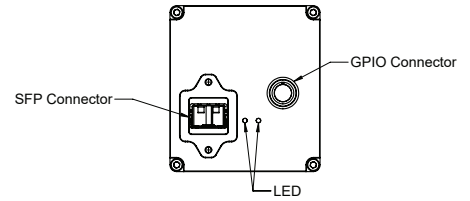
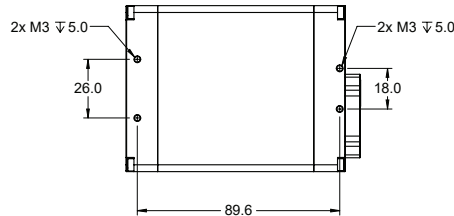
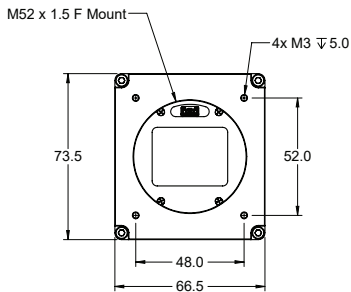
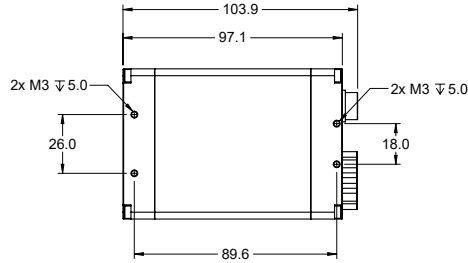
- » PCB Inspection
- » Metrology
- » Immersive 3D Content
- » Finish Line Vision
- » Referee Assist

## Specifications

Sensor	CMV12000
Resolution	4096 x 3072
Megapixels	12 MP
Sensor Type	28mm CMOS
Max Frame Rate	188 fps
Cell Size	5.5µm square
Standard Mount	M42x1x12mm BFL, Optional F Mount Available
Shutter	Global
Bit Depth	8 or 10 Bit
GPIO / Triggering	3 in, 3 out Software, External (Pulse or Edge)
Interface	SFP28- 25GigE
Exposure/Integration*	10µs-1s
Dynamic Range	60 dB
Monochrome Modes	Mono8, Mono10, Mono10Packed
Color Modes	RGB8, BGR8, YUV411, YUV422, YUV444
Raw Modes	BayerGR8, BayerGR10, BayerGR10Packed
Operating System	Win10 (64 bit), Linux (64 bit)
Compliance	CE, FCC, RoHS, WEEE, GigE Vision, GenICam
Power Requirements	9W, 12V
Operating Temperature	0C- 45C
Storage Temperature	-30C to +60C
Dimensions & Weight	97 x 66 x 73- 600g
Warranty	2 Years

\*all minimum exposure specs can vary from what is listed based on the limitations of each sensor as per notice from the manufacturer.

## Mechanical drawings



## Spectral Sensitivity

